



SMART Sync 2009

SMART Sync helps students stay focused on learning. This classroom management software makes it easy for you to guide your class while monitoring and controlling their computers. With a practical set of features that enable smooth transitions between individual, small-group and whole-class activities, SMART Sync simplifies classroom management.

Monitor student activity with ease

With SMART Sync, you can observe student computer screens without leaving your desk. The software lets you view the screens on your computer desktop as full-sized or thumbnail images that can be sorted to match your classroom layout. In the corner of every thumbnail, you can also view the programs students are using, making monitoring even easier.

Keep students focused on learning

Sometimes students can get distracted by the temptations of the digital world. Now you can help them stay on track. SMART Sync software lets you control access to the Internet or specific websites. You can also restrict students from using certain applications, such as games, instant messaging or other computer programs. And if you need to get everyone's attention right away, you can lock all computer screens using a customizable *Eyes to the front* message.

Give students direct support

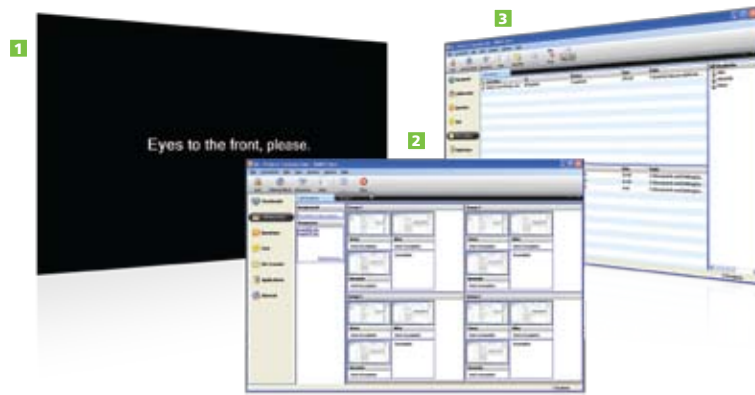
In every class, there are always a few students who are too shy to ask for help. With SMART Sync, students can send you private questions, and you can respond without disturbing the class. You can also take control of a student's computer to guide them remotely through a task or problem.

Broadcast to multiple screens

Make every computer in class the best seat in the house. Broadcast your desktop or share a student's desktop with everyone else in the room. SMART Sync lets you demonstrate a concept, view a webpage or play a video that all students can see on their computer screens. You can also use it to automatically launch a website or open a program on every classroom computer.

Enable student collaboration

SMART Sync helps you inspire classroom collaboration. Following the think-write-pair-share learning model, you can use the software to randomly organize students into small groups. After students have first worked individually on an assignment, they can team up to come to a consensus, sharing screens and collaborating face-to-face or from opposite corners of the room through a chat session. Once finished, the group can hand in the assignment by submitting it digitally to you.



- 1** Lock computers to get students' attention
- 2** Organize students into small groups so they can collaborate
- 3** Easily transfer files between teachers and students

Key features

Monitor

- **See all screens** – Observe all student screens from your desk.
- **Access thumbnail view** – Group, resize and arrange thumbnail images of student desktops.

Focus

- **Lock computers** – Lock one student's computer, selected groups of computers or the entire classroom.
- **Control Internet access** – Block Internet access or allow only selected websites to be viewed.
- **Block applications** – Stop one or more students from accessing applications such as games, instant messaging or other programs.

Support

- **Answer student questions** – Chat with students and answer their questions directly.
- **Control computers** – Remotely take control of computers so you can guide your students through particular tasks.

Share

- **Broadcast screens** – Demonstrate a concept by sharing your screen or any student's screen with the rest of the class.
- **Launch remotely** – Open and close webpages or applications on each student's desktop.
- **Transfer files** – Send documents to students or collect assignments without leaving your computer.

Collaborate

- **Organize students** – Group students randomly and let them work together on an assignment from their own computers.
- **Set up a group chat** – Create a controlled chat environment between groups or the whole class.

Administrate

- **Manage computers** – Shut down, log off or restart all computers simultaneously with a single mouse click.
- **Go wireless** – Run the software on a wireless network.
- **Connect to mobile devices** – Add devices such as laptops and tablet PCs to your class network.

- **Simplify installation** – Install SMART Sync on all student computers automatically using an .msi file.
- **Administrate with ease** – Create SMART school files (.school) that contain information about students, teachers, classes and computer labs in your school. With a SMART school file, teachers can connect to the right student at the right time and apply predefined application and Internet blocking rules.

System requirements

Teacher PC

- Pentium® III processor at 600 MHz or equivalent
- 256 MB of RAM
- Windows® 2000, XP or Windows Vista® operating system
- 100 MB of free hard disk space
- 800 x 600 or higher resolution display with 16-bit or better color quality
- DirectX® 7.0a interface
- Microsoft® Internet Explorer® 5.0 Internet browser or higher
- 10 Mbps TCP/IP network interface adapter

Student PC

- Pentium III processor at 500 MHz or equivalent
- 128 MB of RAM
- Windows 2000, XP or Windows Vista operating system
- 55 MB of free hard disk space
- 600 x 480 or higher resolution display with 16-bit or better color quality
- DirectX 7.0a interface
- Microsoft Internet Explorer 5.0 Internet browser or higher
- 10 Mbps TCP/IP network interface adapter

Authorized SMART reseller

SMART Technologies

Toll Free 1.888.42.SMART (U.S./Canada)

or +1.403.245.0333

www.smarttech.com

Extraordinary made simple™

SMART™